



Building and Safety Division - Public Information

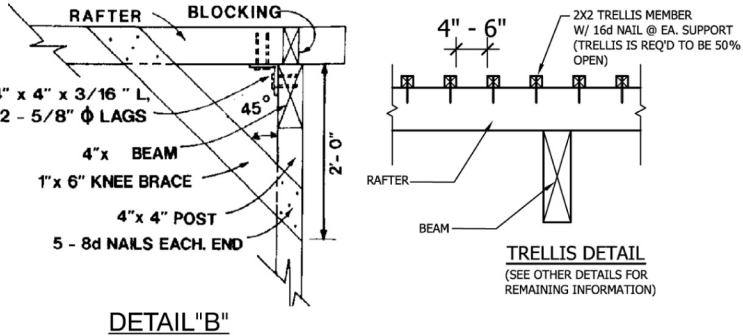
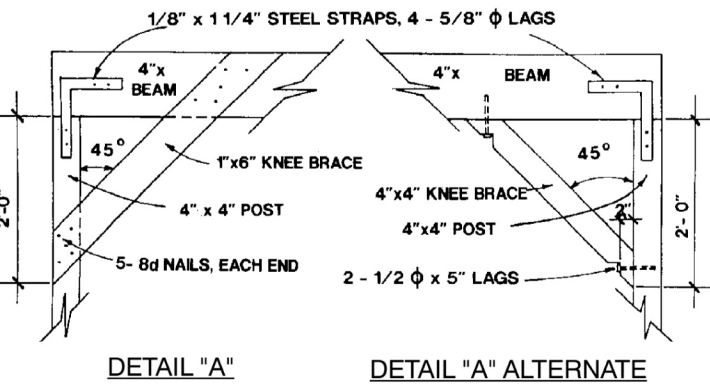
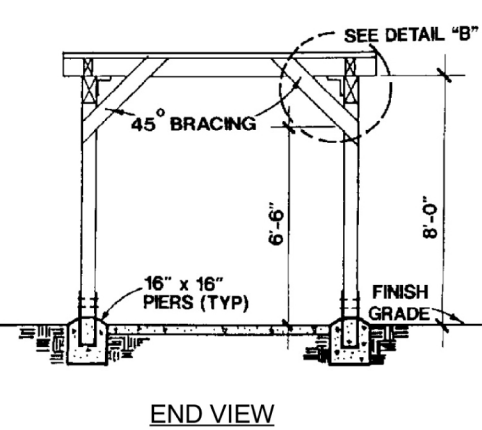
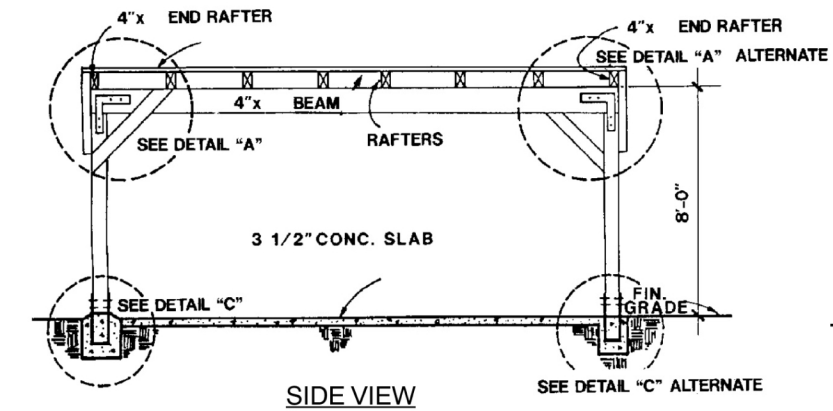
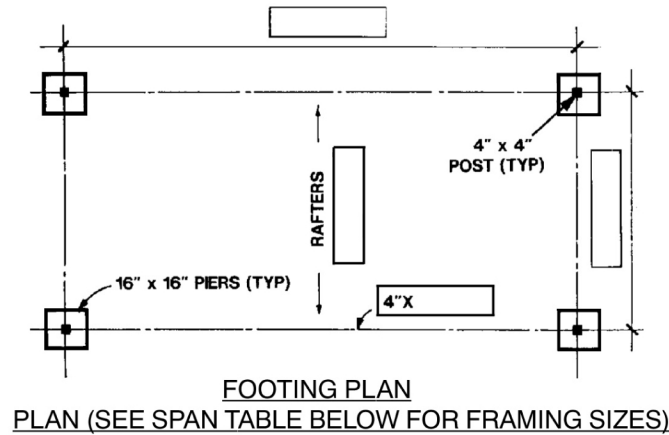
County of Ventura • Resource Management Agency • [http://www.ventura.org/rma/build\\_safe](http://www.ventura.org/rma/build_safe)  
Main Office • 800 S. Victoria Ave, Ventura, CA. 93009 • 805-654-2771  
East County Office • 3855-F Alamo St., 2nd Fl. # 2019A, Simi Valley, CA 93065 • 805-582-8064

DETACHED PATIO WITH ROOF OR TRELLIS COVER

- NOTES:

  - Longer side and one additional side of patio shall be 65% open, below 6'-8" above the floor.
  - One hour fire wall required when exterior face of post/wall is located less than 5'-0" from property line.
  - Roof sheathing, when exposed to weather, plywood shall be of Exterior type. Use minimum 3/8" CDX plywood sheathing with 8d @ 6, 6, 12 and panel span of 24/0 for rafter spacing up to 24" O.C. For rafter spacing exceeding 24" O.C., either use 2xT & G under the plywood or use plywood thickness nailing and panel span rating per CBC tables 2304.7 (1, 3, 4, 5)
- ACCEPTABLE ROOF COVERING

Pitch	Roof	
	Min.	Max.
1. <u>Asphalt shingles #235</u> One layer of 15# felt limit	4:12	No
2. <u>Wood shakes/shingles Class B</u> One layer of 30# felt limit	4:12	No
3. <u>Built-up roof</u> 3-15# felt & 1-90# cap sheet	1/2:12	2:12
4. Any class A/B built-up roofing assembly	per. mfr.	
5. <u>Metal roofing</u> 30 GA thickness for drainage	Adequate slope	



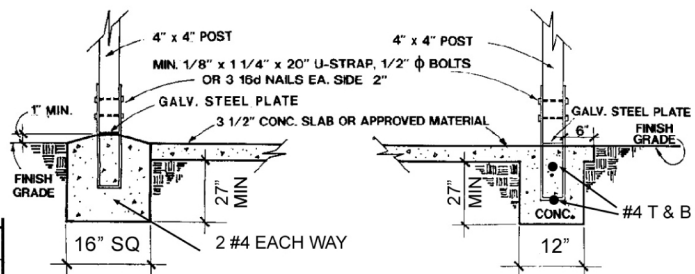
CONCRETE SLAB: 3 1/2 THICK WITH # 3 @ 24" O. C. EACH WAY

ALLOWABLE SPANS FOR ROOF RAFTERS AND HEADERS  
Lumber: Douglas Fir-Larch, Surface-Dry condition (19% maximum moisture content.)

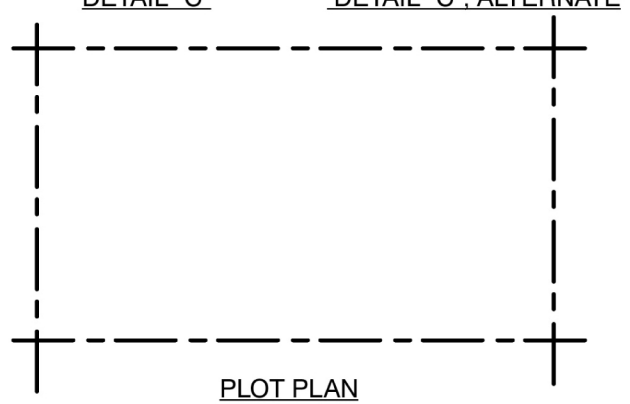
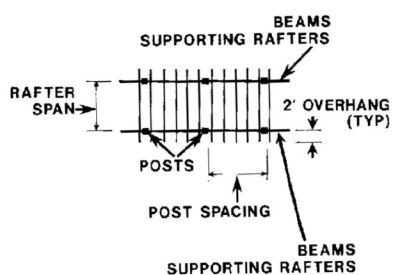
SIZE W x D	GRADE	RAFTER SPACING IN INCHES					
		12	16	24	32	42	48
2 x 4	SS	14-3	13-0	11-3	10-3	9-6	8-9
	#1+	14-0	12-9	11-3	9-6	8-6	7-9
	#1	13-9	12-6	10-3	9-0	7-9	7-3
2 x 6	SS	13-6	12-0	9-9	8-3	7-3	6-9
	#1+	22-6	20-6	18-0	16-0	13-9	13-0
	#1	21-6	18-9	15-3	13-3	11-6	10-9
2 x 8	SS	20-3	17-6	14-3	12-3	10-9	10-0
	#1+	29-9	27-0	23-3	20-3	17-6	16-6
	#1	29-3	25-6	20-9	18-0	15-9	14-6
2 x 10	SS	27-3	23-9	19-3	16-9	14-6	13-6
	#1+	22-6	22-3	18-0	15-6	13-6	12-9
	#1	22-6	22-3	18-0	15-6	13-6	12-9
2 x 12	SS	34-6	28-6	24-9	21-6	20-0	20-0
	#1+	31-0	25-3	22-0	19-0	18-0	18-0
	#1	29-0	23-6	20-6	17-9	16-9	16-9
2 x 12	SS	27-0	22-0	19-0	16-9	15-6	15-6
	#1+	33-0	28-6	25-0	23-3	20-9	20-9
	#1	29-6	25-6	22-3	20-9	19-3	19-3

SIZE W x D	GRADE	RAFTER SPACING IN INCHES				
		32	42	48	60	72
4 x 4	SS	13-9	12-6	12-0	11-0	10-3
	#1+	13-6	12-0	11-3	10-0	9-3
	#1	12-9	11-3	10-6	9-3	8-6
4 x 6	SS	12-0	10-6	9-9	8-9	8-0
	#1+	21-6	19-9	18-6	16-6	15-0
	#1	20-3	17-6	16-6	14-9	13-6
4 x 8	SS	18-9	16-6	15-3	13-9	12-6
	#1+	28-6	26-0	24-6	21-9	20-0
	#1	26-9	23-3	21-9	19-6	17-9
4 x 10	SS	24-9	21-9	20-3	18-0	16-6
	#1+	32-0	30-0	26-9	24-6	24-6
	#1	28-6	26-9	23-9	21-9	20-3

SIZE W x D	GRADE	RAFTER SPACING IN INCHES			
		48	60	72	96
6 x 6	SS	20-9	18-6	16-9	14-6
	#1	18-6	16-6	15-0	13-0
6 x 8	SS	28-3	25-3	23-0	20-0
	#1	25-3	22-6	20-6	17-9
6 x 10	SS	35-9	33-0	30-3	26-3
	#1	34-0	30-6	27-9	24-0



BEAM SIZE W x D	RAFTER SPAN (FT)	MAXIMUM POST SPACING (FT)	
		#1+; #1	#2
4 x 6	8	12-0	10-0
	12	10-0	10-0
	14	10-0	8-0
	16	8-0	8-0
4 x 8	12	14-0	12-0
	16	12-0	12-0
	20	10-0	10-0
	24	10-0	10-0
4 x 10	16	14-0	14-0
	20	14-0	12-0
	24	12-0	12-0
	28	12-0	10-0
4 x 12	16	18-0	16-0
	20	16-0	14-0
	24	14-0	14-0
	28	14-0	12-0



NAME: \_\_\_\_\_  
JOB ADDRESS: \_\_\_\_\_

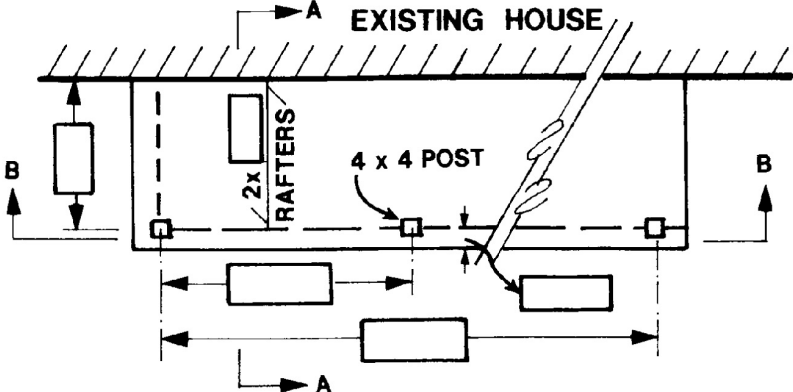
BUILDING OFFICIAL  
STD. B-17  
JAN. 2008  
REVISED 11/06/08



Building and Safety Division - Public Information

County of Ventura • Resource Management Agency • [http://www.ventura.org/rma/build\\_safe](http://www.ventura.org/rma/build_safe)  
Main Office • 800 S. Victoria Ave, Ventura, CA. 93009 • 805-654-2771  
East County Office • 3855-F Alamo St., 2nd Fl. # 2019A, Simi Valley, CA 93065 • 805-582-8064

ATTACHED PATIO WITH ROOF OR TRELLIS COVER

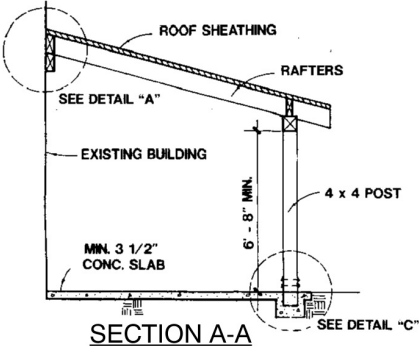


PLAN (SEE SPAN TABLE BELOW FOR FRAMING SIZES)

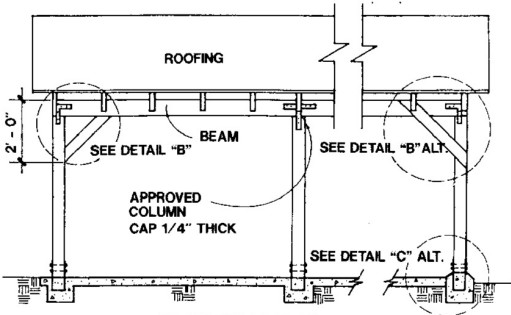
For Roofed Cover Only

- NOTES:
- 1. Longer side and one additional side of patio shall be 65% open, below 6'-8" above the floor.
  - 2. One hour fire wall required when exterior face of post/wall is located less than 5'-0" from property line.
  - 3. Roof sheathing, when exposed to weather, plywood shall be of Exterior type. Use minimum 3/8" CDX plywood sheathing with 8d @ 6,6,12 and panel span of 24/0 for rafter spacing up to 24" O.C. For rafter spacing exceeding 24" O.C., either use 2x T & G under the plywood or use plywood thickness nailing and panel span rating per CBC tables 2304.7 (1, 3, 4, 5)

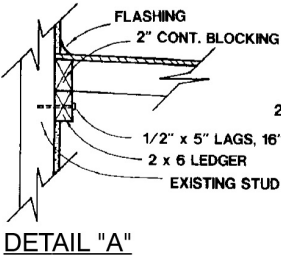
ACCEPTABLE ROOF COVERING		Roof	Pitch
		Min.	Max.
1. Asphalt shingles #235	One layer of 15# felt	4:12	No limit
2. Wood shakes/shingles	Class B		
	One layer of 30# felt	4:12	No limit
3. Built-up roof	3-15# felt & 1-90# cap sheet	1/2:12	2:12
4. Any class A/B built-up roofing assembly		per. mfr.	
5. Metal roofing	30 GA thickness	Adequate slope for drainage	



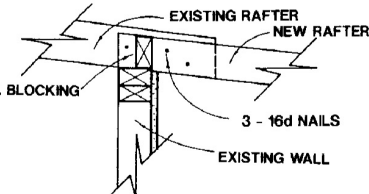
SECTION A-A



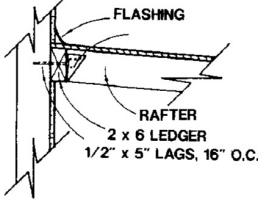
SECTION B-B



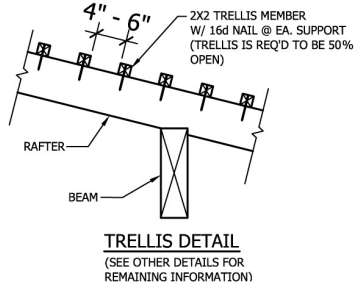
DETAIL "A"



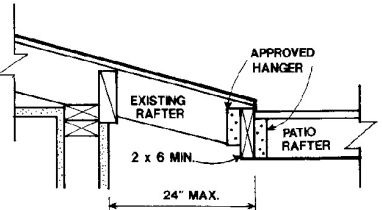
DETAIL "A", ALTERNATE 1



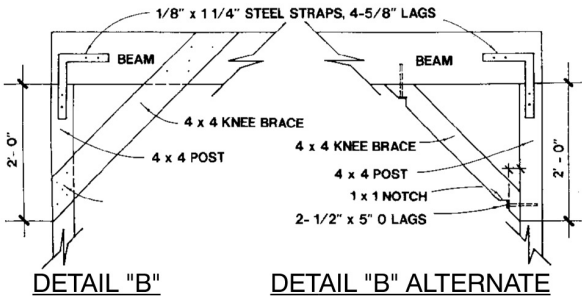
DETAIL "A", ALTERNATE 2



TRELLIS DETAIL  
(SEE OTHER DETAILS FOR REMAINING INFORMATION)

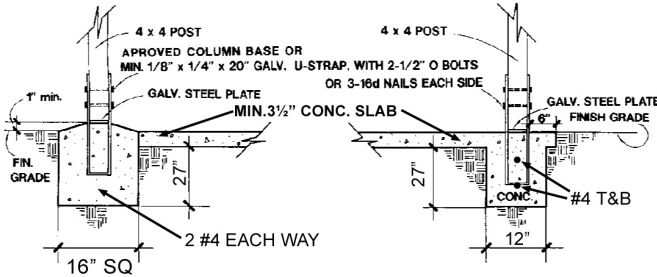


DETAIL "A", ALTERNATE 3



DETAIL "B"

DETAIL "B" ALTERNATE



DETAIL "C"

DETAIL "C" ALTERNATE

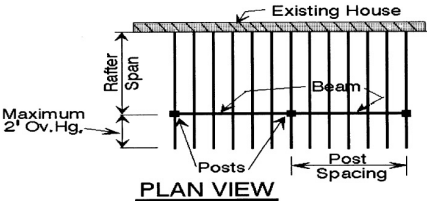
Note: ICC Approved Post-Beam Connectors May Be Substituted  
ALLOWABLE SPANS FOR ROOF RAFTERS AND HEADERS  
Lumber: Douglas Fir-Larch, Surface-Dry condition (19% maximum moisture content.)

SIZE W x D	GRADE	RAFTER SPACING IN INCHES							
		12	16	24	32	42	48	60	72
2 x 4	SS	14-3	13-0	11-3	10-3	9-6	8-9		
	#1+	14-0	12-9	11-3	9-6	8-6	7-9		
	#1	13-9	12-6	10-3	9-0	7-9	7-3		
2 x 6	SS	22-6	20-6	18-0	16-0	13-9	13-0		
	#1+	22-3	20-0	16-3	14-3	12-3	11-6		
	#1	21-6	19-9	15-3	13-3	11-6	10-9		
2 x 8	SS	29-9	27-0	23-3	20-3	17-6	16-6		
	#1+	29-3	25-6	20-9	18-0	15-9	14-6		
	#1	27-3	23-9	19-3	16-9	14-6	13-6		
2 x 10	SS	34-6	28-6	24-9	21-6	20-0			
	#1+	31-0	25-3	22-0	19-0	18-0			
	#1	29-0	23-6	20-6	17-9	16-9			
2 x 12	SS	42-0	33-0	28-6	25-0	23-3			
	#1+	39-6	29-6	25-6	22-3	20-9			
	#1	37-6	27-6	23-9	20-9	19-3			

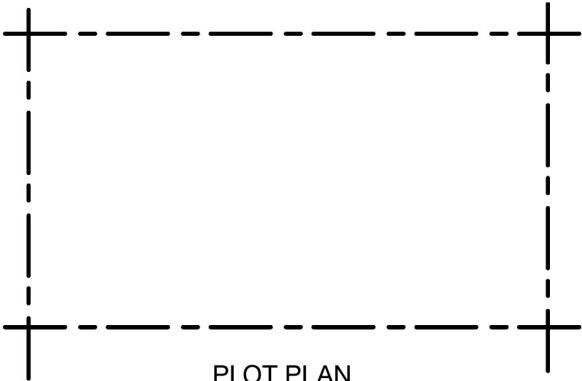
SIZE W x D	GRADE	RAFTER SPACING IN INCHES							
		32	42	48	60	72			
4 x 4	SS	13-9	12-6	11-3	10-0	10-3			
	#1+	13-6	12-0	11-3	10-0	9-3			
	#1	12-9	11-3	10-6	9-3	8-6			
4 x 6	SS	21-6	19-9	18-6	16-6	15-0			
	#1+	20-3	17-6	16-6	14-9	13-6			
	#1	18-9	16-6	15-3	13-9	12-6			
4 x 8	SS	28-6	26-0	24-6	21-9	20-0			
	#1+	26-9	23-3	21-9	19-6	17-9			
	#1	24-9	21-9	20-3	18-0	16-6			
4 x 10	SS	32-0	30-0	26-9	24-6				
	#1+	28-6	26-9	23-9	21-9				
	#1	26-6	24-9	22-3	20-3				

SIZE W x D	GRADE	RAFTER SPACING IN INCHES			
		48	60	72	96
6 x 6	SS	20-9	18-6	16-9	14-6
	#1	18-6	16-6	15-0	13-0
6 x 8	SS	28-3	25-3	23-0	20-0
	#1	25-3	22-6	20-6	17-9
6 x 10	SS	35-9	33-0	30-3	26-3
	#1	34-0	30-6	27-9	24-0

BEAM SIZE W x D	RAFTER SPAN (FT)	MAXIMUM POST SPACING (FT)	
		#1+; #1	#2
4 x 6	8	12-0	10-0
	12	10-0	10-0
	14	10-0	8-0
	16	8-0	8-0
4 x 8	12	14-0	12-0
	16	12-0	12-0
	20	10-0	10-0
	24	10-0	10-0
4 x 10	16	14-0	14-0
	20	14-0	12-0
	24	12-0	12-0
	28	12-0	10-0
4 x 12	16	18-0	16-0
	20	16-0	14-0
	24	14-0	14-0
	28	14-0	12-0



PLAN VIEW



PLOT PLAN

NAME: \_\_\_\_\_  
JOB ADDRESS: \_\_\_\_\_

	STD. B-17
BUILDING OFFICIAL	JAN. 2008